

\$119,500 - 59124 Hwy 36, Rural St. Paul County

MLS® #E4457062

\$119,500

1 Bedroom, 1.00 Bathroom, 936 sqft
Rural on 2.02 Acres

None, Rural St. Paul County, AB

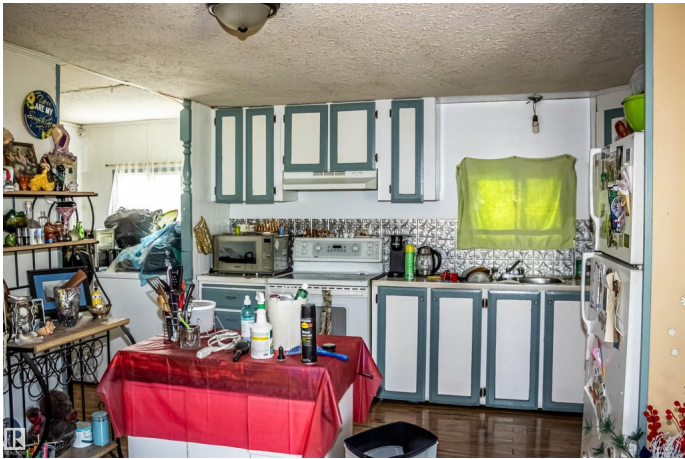
Welcome to this 2.02-acre property located just 5 minutes from Ashmont and 15 minutes from St. Paul. The home features two bedrooms, including a primary, and a four-piece bathroom. Enjoy the spacious front deck and a fully fenced yard with corrals suitable for horses or other livestock. Additional features include a small shop, water shed, cistern, and septic holding tank. Conveniently situated right off the highway, this property offers both accessibility and space for rural living.

Built in 1974

Essential Information

MLS® #	E4457062
Price	\$119,500
Bedrooms	1
Bathrooms	1.00
Full Baths	1
Square Footage	936
Acres	2.02
Year Built	1974
Type	Rural
Sub-Type	Detached Single Family
Style	Bungalow
Status	Active

Community Information



Address	59124 Hwy 36
Area	Rural St. Paul County
Subdivision	None
City	Rural St. Paul County
County	ALBERTA
Province	AB
Postal Code	T0A 3A0

Amenities

Features	Deck, Fire Pit, R.V. Storage, Workshop
----------	--

Interior

Heating	Forced Air-1, Propane
Stories	1
Has Basement	Yes
Basement	None, No Basement

Exterior

Exterior Features	Fenced, Landscaped, Private Setting, Treed Lot
Foundation	Block, Preserved Wood

Additional Information

Date Listed	September 9th, 2025
Days on Market	2
Zoning	Zone 60

DATA IS DEEMED RELIABLE BUT IS NOT GUARANTEED ACCURATE BY THE REALTORS® ASSOCIATION OF EDMONTON. COPYRIGHT 2025 BY THE REALTORS® ASSOCIATION OF EDMONTON. ALL RIGHTS RESERVED. Trademarks are owned or controlled by the Canadian Real Estate Association (CREA) and identify real estate professionals who are members of CREA (REALTOR®, REALTORS®) and/or the quality of services they provide (MLS®, Multiple Listing Service®)

Listing information last updated on September 11th, 2025 at 4:47am MDT