

# **\$900,000 - 53215 Rge Road 13, Rural Parkland County**

MLS® #E4457087

**\$900,000**

4 Bedroom, 3.00 Bathroom, 2,233 sqft

Rural on 32.60 Acres

None, Rural Parkland County, AB

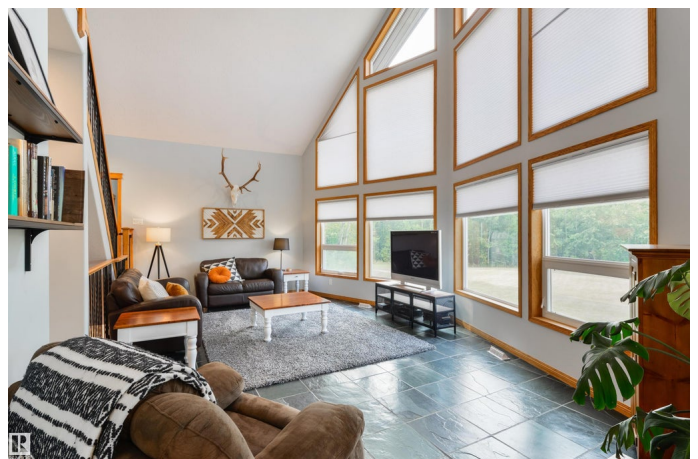
Rustic charm meets modern luxury â€“ youâ€™re going to fall in love with this stunning home! Features here include central A/C, hardwood flooring, black hardware & rod-iron accents throughout, a spacious kitchen with center island, separate dinette, & TWO pantries, a formal dining room, vaulted exposed WOOD-BEAM ceilings in the living room with a wall of windows framing in breathtaking views of the property, 4 total bedrooms including a TOP-FLOOR ownerâ€™s suite with walk-in closet & 5pc ensuite, and a fully-finished WALK-OUT basement with cozy wood-burning fireplace and tons of storage! Now for the exterior â€“ itâ€™s incredible! Relax or entertain on the full-width upper-level deck, extend your living space on the ground-level stone patio, enjoy evening campfires around your backyard firepit, or live out your hobby-loving dreams in your WORKSHOP or single-detached garage. 32 acres of pure bliss awaits â€“ this acreage is the perfect balance of tranquility & convenience, just a short PAVED drive to Stony Plain.

Built in 2004

## **Essential Information**

MLS® # E4457087

Price \$900,000



Bedrooms	4
Bathrooms	3.00
Full Baths	3
Square Footage	2,233
Acres	32.60
Year Built	2004
Type	Rural
Sub-Type	Detached Single Family
Style	1 and Half Storey
Status	Active

### Community Information

Address	53215 Rge Road 13
Area	Rural Parkland County
Subdivision	None
City	Rural Parkland County
County	ALBERTA
Province	AB
Postal Code	T7Y 0C1

### Amenities

Features	Air Conditioner, Deck, Fire Pit, No Smoking Home, Patio, R.V. Storage, Vaulted Ceiling, Walkout Basement, Workshop, See Remarks
----------	---

### Interior

Interior Features	ensuite bathroom
Heating	Forced Air-1, In Floor Heat System, Natural Gas
Fireplace	Yes
Stories	3
Has Basement	Yes
Basement	Full, Finished

### Exterior

Exterior	Wood
Exterior Features	Backs Onto Park/Trees, Landscaped, Private Setting, Ravine View, Recreation Use, Treed Lot, See Remarks, Partially Fenced
Construction	Wood
Foundation	Concrete Perimeter

### Additional Information

Date Listed September 10th, 2025

Days on Market 1

Zoning Zone 90

DATA IS DEEMED RELIABLE BUT IS NOT GUARANTEED ACCURATE BY THE REALTORS® ASSOCIATION OF EDMONTON. COPYRIGHT 2025 BY THE REALTORS® ASSOCIATION OF EDMONTON. ALL RIGHTS RESERVED. Trademarks are owned or controlled by the Canadian Real Estate Association (CREA) and identify real estate professionals who are members of CREA (REALTOR®, REALTORS®) and/or the quality of services they provide (MLS®, Multiple Listing Service®)

Listing information last updated on September 11th, 2025 at 4:47am MDT