

\$84,999 - 203 9028 Jasper Avenue, Edmonton

MLS® #E4457354

\$84,999

2 Bedroom, 1.00 Bathroom, 903 sqft

Condo / Townhouse on 0.00 Acres

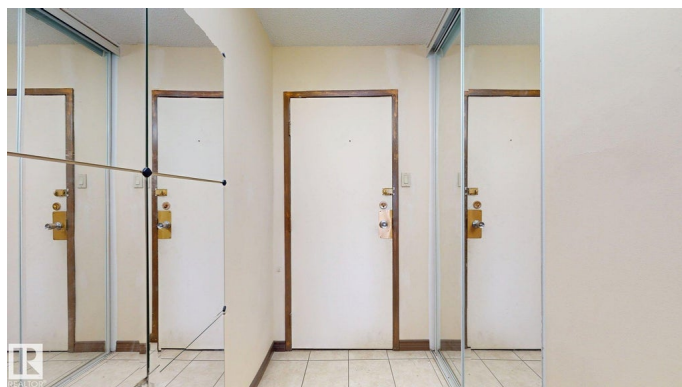
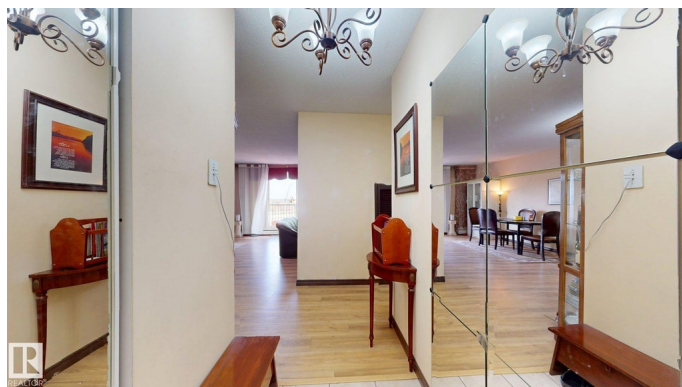
Boyle Street, Edmonton, AB

DOWNTOWN CONDO WITH STUNNING RIVER VALLEY VIEWS & ALL UTILITIES INCLUDED! Bright & spacious 2 BEDROOM, 1 BATH unit in the heart of Edmonton's core. Enjoy PANORAMIC RIVER VALLEY VIEWS right from your PRIVATE BALCONY plus unbeatable value with HEAT, WATER & ELECTRICITY INCLUDED. Features include ASSIGNED UNDERGROUND PARKING, SECURE STORAGE, and unbeatable walkability. Steps to the ICE DISTRICT, COMMONWEALTH REC CENTRE, LRT, SHOPPING, CAFE'S, RESTAURANTS, NIGHTLIFE, and the RIVER VALLEY TRAILS. Ideal for FIRST-TIME BUYERS, STUDENTS, YOUNG PROFESSIONALS, OR INVESTORS seeking convenience and lifestyle in a prime downtown location.

Built in 1971

Essential Information

MLS® #	E4457354
Price	\$84,999
Bedrooms	2
Bathrooms	1.00
Full Baths	1
Square Footage	903
Acres	0.00
Year Built	1971



Type	Condo / Townhouse
Sub-Type	Apartment High Rise
Style	Multi Level Apartment
Status	Active

Community Information

Address	203 9028 Jasper Avenue
Area	Edmonton
Subdivision	Boyle Street
City	Edmonton
County	ALBERTA
Province	AB
Postal Code	T5H 3S8

Amenities

Amenities	See Remarks
Parking	Underground

Interior

Appliances	Dishwasher-Built-In, Hood Fan, Refrigerator, Stove-Electric
Heating	See Remarks
# of Stories	11
Stories	1
Has Basement	Yes
Basement	None, No Basement

Exterior

Exterior	Brick
Exterior Features	Golf Nearby, Public Transportation, River Valley View, Schools, Shopping Nearby, View City, View Downtown
Roof	Tar & Gravel
Construction	Brick
Foundation	Concrete Perimeter

Additional Information

Date Listed	September 11th, 2025
Days on Market	2
Zoning	Zone 13
Condo Fee	\$928

DATA IS DEEMED RELIABLE BUT IS NOT GUARANTEED ACCURATE BY THE REALTORS® ASSOCIATION OF EDMONTON. COPYRIGHT 2025 BY THE REALTORS® ASSOCIATION OF EDMONTON. ALL RIGHTS RESERVED. Trademarks are owned or controlled by the Canadian Real Estate Association (CREA) and identify real estate professionals who are members of CREA (REALTOR®, REALTORS®) and/or the quality of services they provide (MLS®, Multiple Listing Service®)

Listing information last updated on September 13th, 2025 at 1:02am MDT