

\$214,900 - 226 13111 140 Avenue, Edmonton

MLS® #E4457627

\$214,900

2 Bedroom, 2.00 Bathroom, 861 sqft

Condo / Townhouse on 0.00 Acres

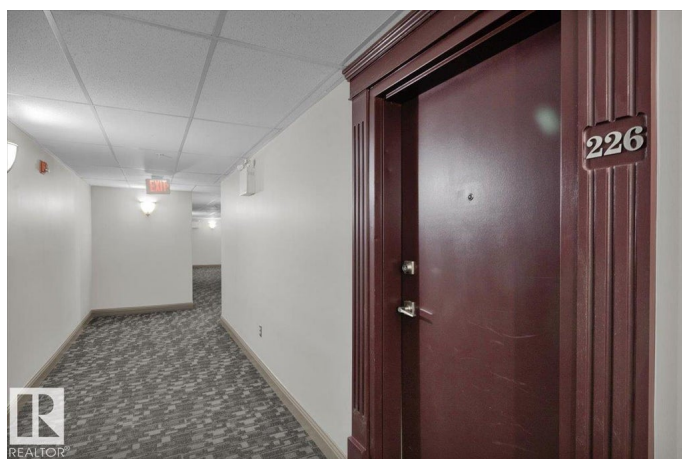
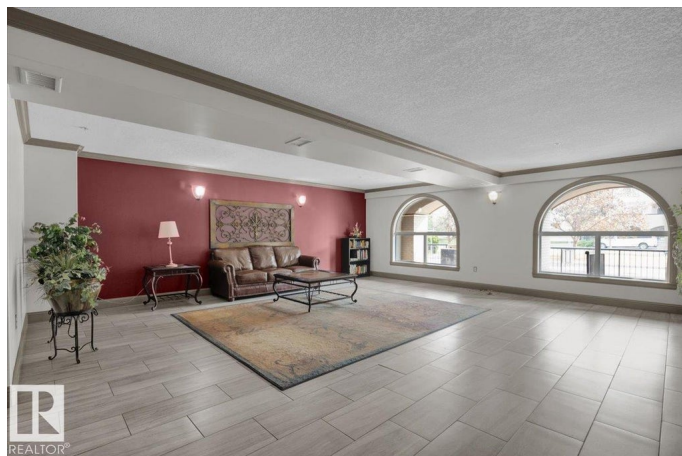
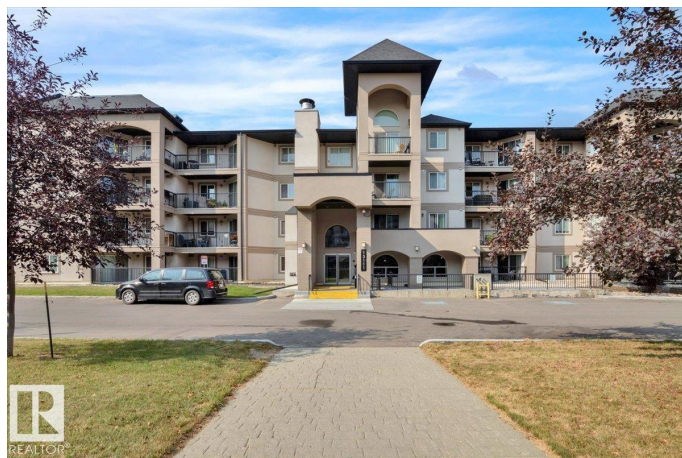
Pembina, Edmonton, AB

Visit REALTOR® website for additional information. IMMACULATE 2 bedroom, 2 full bath condo offering comfort, style, and convenience. This well-maintained home features CENTRAL AIR CONDITIONING, an open floor plan, FRESH PAINT throughout, and a LARGE DECK with a NATURAL GAS BARBECUE included perfect for entertaining. The SPACIOUS primary suite boasts a 4 piece ensuite bath and a large walk-in closet, while the second bedroom is served by another full bathroom, ideal for guests or family. Enjoy the benefit of TITLED UNDERGROUND HEATED PARKING with additional storage. The building is meticulously cared for, offering plenty of VISITOR PARKING and a welcoming atmosphere. PET FRIENDLY (with board approval) and ideally located close to restaurants, shopping, schools, and public transportation, this condo combines modern living with everyday convenience.

Built in 2006

Essential Information

MLS® #	E4457627
Price	\$214,900
Bedrooms	2
Bathrooms	2.00
Full Baths	2



Square Footage	861
Acres	0.00
Year Built	2006
Type	Condo / Townhouse
Sub-Type	Lowrise Apartment
Style	Single Level Apartment
Status	Active

Community Information

Address	226 13111 140 Avenue
Area	Edmonton
Subdivision	Pembina
City	Edmonton
County	ALBERTA
Province	AB
Postal Code	T6V 0B1

Amenities

Amenities	Air Conditioner, Detectors Smoke, No Smoking Home, Parking-Visitor, Secured Parking, Security Door, Vinyl Windows, Storage Cage, Natural Gas BBQ Hookup
Parking	Single Indoor

Interior

Interior Features	ensuite bathroom
Appliances	Air Conditioning-Central, Dishwasher-Built-In, Garage Opener, Microwave Hood Fan, Refrigerator, Stacked Washer/Dryer, Stove-Electric, Window Coverings
Heating	Forced Air-1, Water
# of Stories	4
Stories	1
Has Basement	Yes
Basement	None, No Basement

Exterior

Exterior	Wood, Stucco
Exterior Features	Playground Nearby, Public Swimming Pool, Public Transportation, Schools, Shopping Nearby
Roof	Asphalt Shingles
Construction	Wood, Stucco

Foundation Concrete Perimeter

Additional Information

Date Listed September 12th, 2025
Days on Market 1
Zoning Zone 27
Condo Fee \$489

DATA IS DEEMED RELIABLE BUT IS NOT GUARANTEED ACCURATE BY THE REALTORS® ASSOCIATION OF EDMONTON. COPYRIGHT 2025 BY THE REALTORS® ASSOCIATION OF EDMONTON. ALL RIGHTS RESERVED.Trademarks are owned or controlled by the Canadian Real Estate Association (CREA) and identify real estate professionals who are members of CREA (REALTOR®, REALTORS®) and/or the quality of services they provide (MLS®, Multiple Listing Service®)
Listing information last updated on September 13th, 2025 at 11:18am MDT