

\$799,000 - 81 53221 Rge Road 223, Rural Strathcona County

MLS® #E4458218

\$799,000

3 Bedroom, 3.00 Bathroom, 1,481 sqft

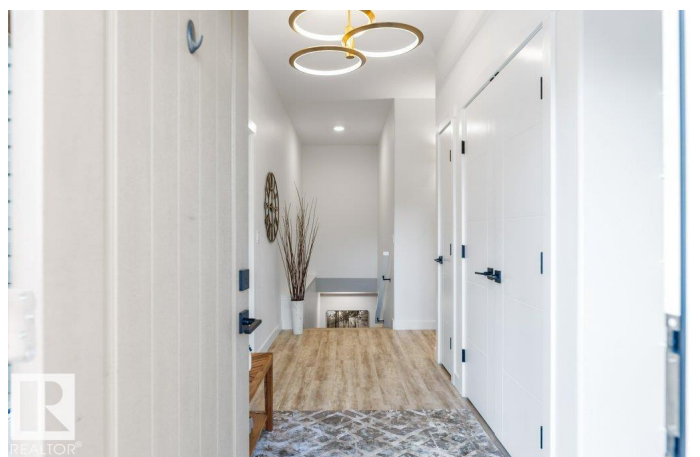
Rural on 2.00 Acres

Queensdale Place South, Rural Strathcona County, AB

Tucked among the trees in Queensdale Place, just 5 min from Sherwood Pk, this stunning bungalow is nestled on a PRIVATE 2 acre lot, featuring 3 bedrms, 3 bathrms, heated DBL attached garage, plus DBL detached garage! The bright, open layout drenches the main floor in natural light. Kitchen includes high end stainless appliances, ample cabinetry, prep island & W/I pantry. Enjoy the large dining area w/ views to your spacious living room-perfect for gathering. King-sized primary suite boasts a WIC & 3pc ensuite w/ spa-inspired shower. A 2nd bedrm & 4pc bath complete the main floor. Downstairs, the basement features a family room, 3rd bedrm, 4pc bath, laundry, storage & a flex space (could easily become a 4th bedrm). Enjoy peace & privacy as you relax on your covered veranda w/ composite deck. Upgrades incl \$60K state of the art septic; concrete driveways for both garages. With a groomed trail inside your fenced property, youâ€™™ll LOVE to quad & bike! All just minutes from schools, parks & shopping! 10/10

Built in 2021

Essential Information



MLS® #	E4458218
Price	\$799,000
Bedrooms	3
Bathrooms	3.00
Full Baths	3
Square Footage	1,481
Acres	2.00
Year Built	2021
Type	Rural
Sub-Type	Detached Single Family
Style	Bungalow
Status	Active

Community Information

Address	81 53221 Rge Road 223
Area	Rural Strathcona County
Subdivision	Queensdale Place South
City	Rural Strathcona County
County	ALBERTA
Province	AB
Postal Code	T8E 2K1

Amenities

Features	Ceiling 9 ft., Deck, Detectors Smoke, Front Porch, No Animal Home, No Smoking Home, Natural Gas BBQ Hookup
----------	--

Interior

Interior Features	ensuite bathroom
Heating	Forced Air-1, Natural Gas
Stories	2
Has Basement	Yes
Basement	Full, Finished

Exterior

Exterior	Wood
Exterior Features	Level Land, Low Maintenance Landscape, Private Setting
Construction	Wood
Foundation	Concrete Perimeter

Additional Information

Date Listed September 17th, 2025

Days on Market 1

Zoning Zone 60

DATA IS DEEMED RELIABLE BUT IS NOT GUARANTEED ACCURATE BY THE REALTORS® ASSOCIATION OF EDMONTON. COPYRIGHT 2025 BY THE REALTORS® ASSOCIATION OF EDMONTON. ALL RIGHTS RESERVED. Trademarks are owned or controlled by the Canadian Real Estate Association (CREA) and identify real estate professionals who are members of CREA (REALTOR®, REALTORS®) and/or the quality of services they provide (MLS®, Multiple Listing Service®)

Listing information last updated on September 17th, 2025 at 10:02pm MDT