

\$675,000 - 9645 150 Street, Edmonton

MLS® #E4458606

\$675,000

6 Bedroom, 4.00 Bathroom, 1,723 sqft

Single Family on 0.00 Acres

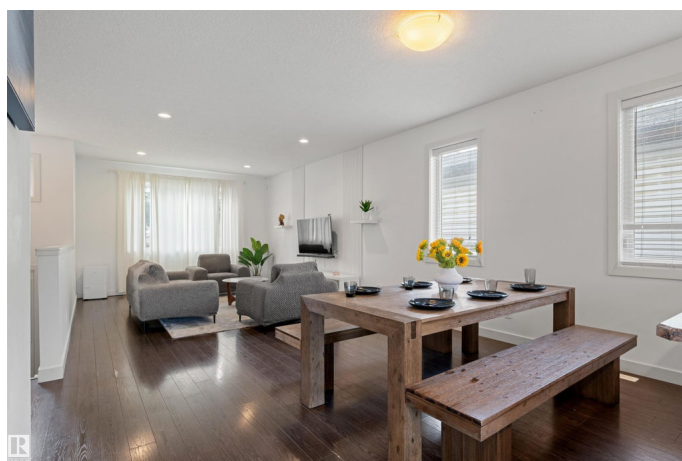
West Jasper Place, Edmonton, AB

This beautifully updated 1,723 sq. ft. home with a 1,505 sq. ft. walk-out basement is ideally located on a quiet street—just one block from Edmonton’s iconic Candy Cane Lane. If you love Christmas, this is the perfect spot to call home! The main floor features large windows, a modern kitchen with stainless steel appliances, 3 bedrooms including a primary with 5-piece ensuite, a 3-piece bath, main floor laundry, A/C, and double attached single garages for added convenience. The basement offers a legal 2-bedroom suite with 9-ft ceilings, full kitchen, 3-piece bath, and in-suite laundry, plus a separate 1-bedroom suite with private entrance, 3-piece bath, laundry, and rough-in kitchen. Outside, enjoy a massive fenced backyard with back alley access, perfect for entertaining or future development. Whether you're looking to live in or invest, this property offers incredible flexibility, income potential, and a prime location.

Built in 2013

Essential Information

MLS® #	E4458606
Price	\$675,000
Bedrooms	6
Bathrooms	4.00



Full Baths	4
Square Footage	1,723
Acres	0.00
Year Built	2013
Type	Single Family
Sub-Type	Detached Single Family
Style	Raised Bungalow
Status	Active

Community Information

Address	9645 150 Street
Area	Edmonton
Subdivision	West Jasper Place
City	Edmonton
County	ALBERTA
Province	AB
Postal Code	T5P 1N2

Amenities

Amenities	On Street Parking, Air Conditioner, Barbecue-Built-In, Carbon Monoxide Detectors, Ceiling 10 ft., Deck, Detectors Smoke, Walkout Basement, 9 ft. Basement Ceiling
Parking Spaces	2
Parking	Single Garage Detached

Interior

Interior Features	ensuite bathroom
Appliances	Air Conditioning-Central, Dishwasher-Built-In, Dryer, Garage Opener, Microwave Hood Fan, Oven-Microwave, Refrigerator, Stacked Washer/Dryer, Stove-Electric, Washer
Heating	Forced Air-1, Natural Gas
Stories	2
Has Suite	Yes
Has Basement	Yes
Basement	Full, Finished

Exterior

Exterior	Wood, Vinyl
Exterior Features	Fenced, Landscaped, Playground Nearby

Roof	Asphalt Shingles
Construction	Wood, Vinyl
Foundation	Concrete Perimeter

Additional Information

Date Listed	September 19th, 2025
Zoning	Zone 22

DATA IS DEEMED RELIABLE BUT IS NOT GUARANTEED ACCURATE BY THE REALTORS® ASSOCIATION OF EDMONTON. COPYRIGHT 2025 BY THE REALTORS® ASSOCIATION OF EDMONTON. ALL RIGHTS RESERVED.Trademarks are owned or controlled by the Canadian Real Estate Association (CREA) and identify real estate professionals who are members of CREA (REALTOR®, REALTORS®) and/or the quality of services they provide (MLS®, Multiple Listing Service®)

Listing information last updated on September 19th, 2025 at 7:32pm MDT