

\$748,888 - 410 Olsen Close, Edmonton

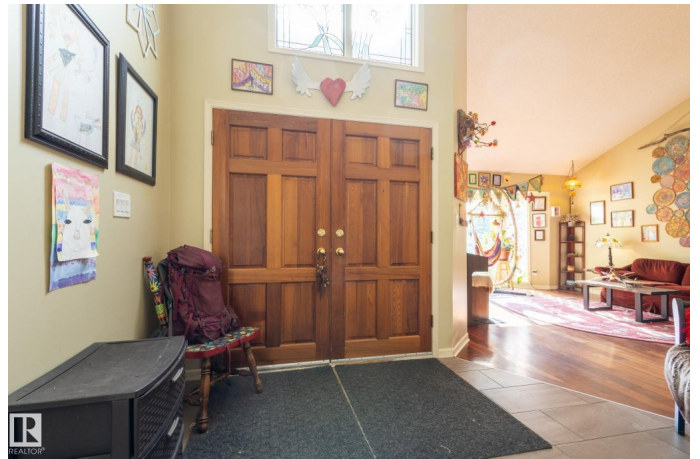
MLS® #E4458625

\$748,888

5 Bedroom, 3.50 Bathroom, 2,881 sqft
Single Family on 0.00 Acres

Ogilvie Ridge, Edmonton, AB

In prestigious Ogilvie Ridge(ACE LANGE BUILT), this Expansive home blends timeless design with a rare ravine setting. The grand open-to-below entry showcases a sweeping curved staircase and floods of natural light, creating a striking first impression. Generous main floor living and dining areas flow with ease, offering both comfort and sophistication. Upstairs, spacious bedrooms and a versatile bonus room provide flexibility for family and guests, while the finished basement extends the living space with room for recreation, hobbies, or a home gym. Outside, the massive pie-shaped lot is landscaped with mature trees and backs directly onto the ravine and trails, offering unparalleled privacy and a true connection to nature. A sun-filled deck and sprawling yard make this a retreat in the city. With a double attached garage and close proximity to schools, parks, shopping, and major routes, AWESOME location in one of Edmonton's most sought-after communities.



Built in 1985

Essential Information

| | |
|----------|-----------|
| MLS® # | E4458625 |
| Price | \$748,888 |
| Bedrooms | 5 |

| | |
|----------------|------------------------|
| Bathrooms | 3.50 |
| Full Baths | 3 |
| Half Baths | 1 |
| Square Footage | 2,881 |
| Acres | 0.00 |
| Year Built | 1985 |
| Type | Single Family |
| Sub-Type | Detached Single Family |
| Style | 2 Storey |
| Status | Active |

Community Information

| | |
|-------------|-----------------|
| Address | 410 Olsen Close |
| Area | Edmonton |
| Subdivision | Ogilvie Ridge |
| City | Edmonton |
| County | ALBERTA |
| Province | AB |
| Postal Code | T6R 1L2 |

Amenities

| | |
|----------------|---------------------------------|
| Amenities | Air Conditioner, Deck, Skylight |
| Parking Spaces | 4 |
| Parking | Double Garage Attached |

Interior

| | |
|-------------------|--|
| Interior Features | ensuite bathroom |
| Appliances | Air Conditioning-Central, Dishwasher-Built-In, Dryer, Garage Control, Garage Opener, Microwave Hood Fan, Refrigerator, Stove-Electric, Washer, Curtains and Blinds |
| Heating | Forced Air-2, Natural Gas |
| Stories | 3 |
| Has Basement | Yes |
| Basement | Full, Finished |

Exterior

| | |
|-------------------|---|
| Exterior | Wood, Brick, Vinyl |
| Exterior Features | Airport Nearby, Backs Onto Park/Trees, Fenced, Golf Nearby, Landscaped, Playground Nearby, Public Swimming Pool, Public |

| | |
|--------------|---|
| | Transportation, Schools, Shopping Nearby, Ski Hill Nearby |
| Roof | Cedar Shakes |
| Construction | Wood, Brick, Vinyl |
| Foundation | Concrete Perimeter |

Additional Information

| | |
|----------------|----------------------|
| Date Listed | September 19th, 2025 |
| Days on Market | 1 |
| Zoning | Zone 14 |
| HOA Fees | 330 |
| HOA Fees Freq. | Annually |

DATA IS DEEMED RELIABLE BUT IS NOT GUARANTEED ACCURATE BY THE REALTORS® ASSOCIATION OF EDMONTON. COPYRIGHT 2025 BY THE REALTORS® ASSOCIATION OF EDMONTON. ALL RIGHTS RESERVED. Trademarks are owned or controlled by the Canadian Real Estate Association (CREA) and identify real estate professionals who are members of CREA (REALTOR®, REALTORS®) and/or the quality of services they provide (MLS®, Multiple Listing Service®)

Listing information last updated on September 19th, 2025 at 10:02pm MDT