

Courtesy Of Sandra M Loo Of KIC Realty

\$305,000 - 207 9927 79 Avenue, Edmonton

MLS® #E4459457

\$305,000

2 Bedroom, 2.00 Bathroom, 1,043 sqft
Condo / Townhouse on 0.00 Acres

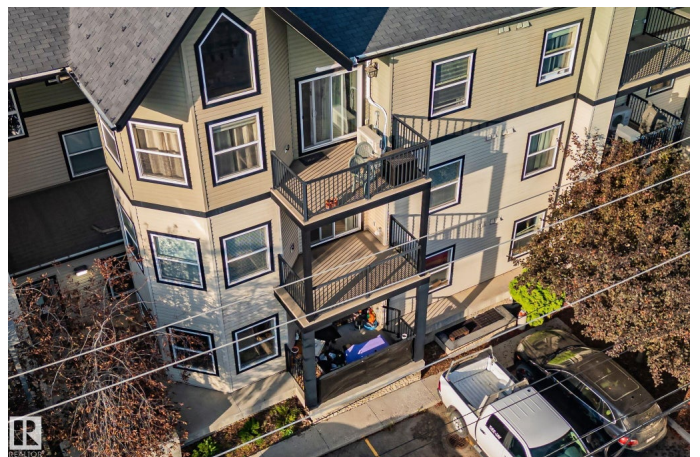
Ritchie, Edmonton, AB

Life is better in Ritchie! This south-facing 2-bedroom, 2-bathroom condo offers over 1,042 sq ft of bright, open living space. The functional layout includes a spacious living area, a well-appointed kitchen, and generously sized bedrooms—complete with a primary suite featuring a private ensuite. Recent updates include new laminate flooring and fresh carpet in the primary bedroom. Enjoy the convenience of in-suite laundry, 2 titled parking stalls (1 underground + 1 surface), underground storage cage, plenty of storage in the unit, and a walkable location steps from Mill Creek Ravine, Whyte Avenue, local cafes, shops, and all the charm Ritchie is known for.

Built in 2007

Essential Information

MLS® #	E4459457
Price	\$305,000
Bedrooms	2
Bathrooms	2.00
Full Baths	2
Square Footage	1,043
Acres	0.00
Year Built	2007
Type	Condo / Townhouse
Sub-Type	Lowrise Apartment



Style Single Level Apartment
Status Active

Community Information

Address 207 9927 79 Avenue
Area Edmonton
Subdivision Ritchie
City Edmonton
County ALBERTA
Province AB
Postal Code T6E 1R3

Amenities

Amenities On Street Parking, Ceiling 9 ft., Detectors Smoke, Intercom, Storage-In-Suite, Storage Cage
Parking Spaces 2
Parking Heated, Stall, Underground, See Remarks

Interior

Interior Features ensuite bathroom
Appliances Dishwasher-Built-In, Dryer, Microwave Hood Fan, Refrigerator, Stove-Electric, Washer, Window Coverings
Heating Hot Water, Natural Gas
of Stories 3
Stories 1
Has Basement Yes
Basement None, No Basement

Exterior

Exterior Wood, Stone, Vinyl
Exterior Features Back Lane, Schools, Shopping Nearby
Roof Asphalt Shingles
Construction Wood, Stone, Vinyl
Foundation Concrete Perimeter

Additional Information

Date Listed September 25th, 2025
Days on Market 2
Zoning Zone 17

Condo Fee \$619

DATA IS DEEMED RELIABLE BUT IS NOT GUARANTEED ACCURATE BY THE REALTORS® ASSOCIATION OF EDMONTON. COPYRIGHT 2025 BY THE REALTORS® ASSOCIATION OF EDMONTON. ALL RIGHTS RESERVED. Trademarks are owned or controlled by the Canadian Real Estate Association (CREA) and identify real estate professionals who are members of CREA (REALTOR®, REALTORS®) and/or the quality of services they provide (MLS®, Multiple Listing Service®)

Listing information last updated on September 27th, 2025 at 6:47pm MDT