

# \$619,800 - 6731 Speaker Place, Edmonton

MLS® #E4460606

**\$619,800**

3 Bedroom, 2.50 Bathroom, 2,227 sqft  
Single Family on 0.00 Acres

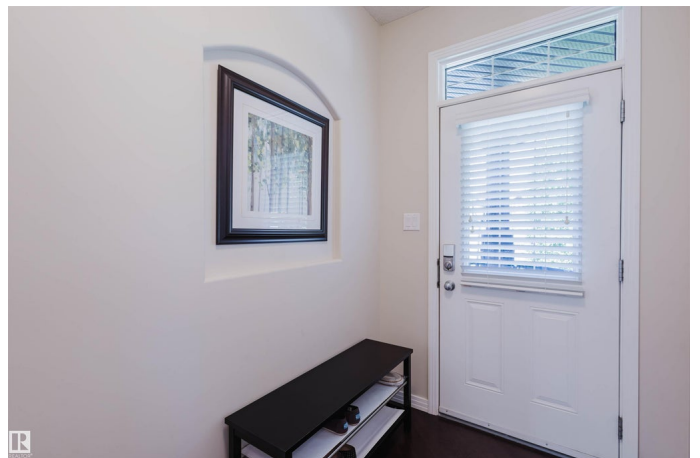
South Terwillegar, Edmonton, AB

Welcome to this meticulously maintained Original Owner home tucked in a quiet cul-de-sac in desirable South Terwillegar! Sitting on a 32' pocket lot with a southwest backyard, this upgraded 2,220+ sqft 2-storey is sure to impress. The main floor offers a bright living room with a gas fireplace, large windows, a spacious den/office, and an open concept 9â€™™ ceiling layout with hardwood & tile. The gourmet kitchen boasts granite counters, ample cabinets, walk-through pantry, and flows into a huge dining area with patio door to the deck. Upstairs features a \*massive\* primary bedroom with a huge W/I closet & spa-like 5pc ensuite (dual sinks, soaker tub, glass shower) plus direct access to the laundry. Two additional bedrooms share a convenient Jack & Jill bath. Enjoy the oversized 22â€™™x21â€™™ double garage & fully landscaped private yard. Steps to trails, ponds, playgrounds & transit, and close to schools, Terwillegar Rec Centre, shopping & quick access to Henday!

Built in 2009

## Essential Information

MLS® #	E4460606
Price	\$619,800
Bedrooms	3



Bathrooms	2.50
Full Baths	2
Half Baths	1
Square Footage	2,227
Acres	0.00
Year Built	2009
Type	Single Family
Sub-Type	Detached Single Family
Style	2 Storey
Status	Active

### **Community Information**

Address	6731 Speaker Place
Area	Edmonton
Subdivision	South Terwillegar
City	Edmonton
County	ALBERTA
Province	AB
Postal Code	T6R 0N9

### **Amenities**

Amenities	Ceiling 9 ft., Deck, Detectors Smoke, Hot Water Natural Gas, No Animal Home, No Smoking Home, Vinyl Windows
Parking Spaces	4
Parking	Double Garage Attached, Over Sized

### **Interior**

Interior Features	ensuite bathroom
Appliances	Dishwasher-Built-In, Dryer, Garage Control, Garage Opener, Hood Fan, Refrigerator, Stove-Electric, Washer, Window Coverings
Heating	Forced Air-1, Natural Gas
Stories	2
Has Basement	Yes
Basement	Full, Unfinished

### **Exterior**

Exterior	Wood, Stone, Vinyl
Exterior Features	Back Lane, Cul-De-Sac, Fenced, Flat Site, Landscaped, No Through Road, Playground Nearby, Public Transportation, Schools, Shopping

	Nearby
Roof	Asphalt Shingles
Construction	Wood, Stone, Vinyl
Foundation	Concrete Perimeter

### **School Information**

Elementary	Nellie Carlson School
Middle	Nellie Carlson School
High	Lillian Osborne School

### **Additional Information**

Date Listed	October 3rd, 2025
Days on Market	13
Zoning	Zone 14

DATA IS DEEMED RELIABLE BUT IS NOT GUARANTEED ACCURATE BY THE REALTORS® ASSOCIATION OF EDMONTON. COPYRIGHT 2025 BY THE REALTORS® ASSOCIATION OF EDMONTON. ALL RIGHTS RESERVED. Trademarks are owned or controlled by the Canadian Real Estate Association (CREA) and identify real estate professionals who are members of CREA (REALTOR®, REALTORS®) and/or the quality of services they provide (MLS®, Multiple Listing Service®)

Listing information last updated on October 16th, 2025 at 11:47am MDT