

\$799,000 - 204 3410 Ste. Anne Trail, Rural Lac Ste. Anne County

MLS® #E4460717

\$799,000

4 Bedroom, 3.50 Bathroom, 2,307 sqft

Rural on 0.17 Acres

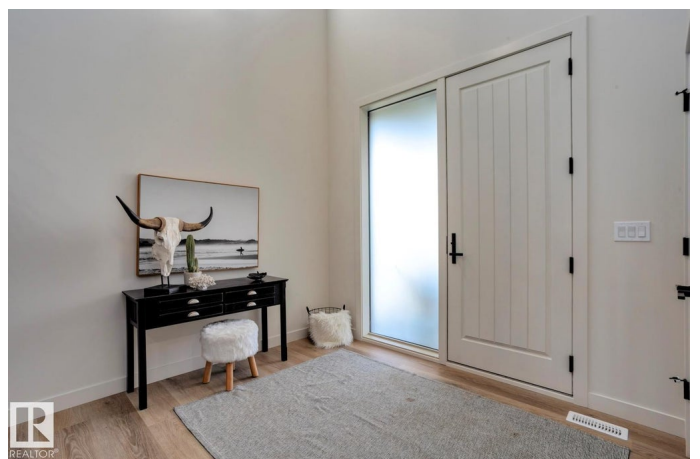
Windmill Harbour, Rural Lac Ste. Anne County, AB

Located in one of Alberta's most exclusive lake communities, this fully finished 4 bed, 4 bath home offers the ultimate retreat just 40 min from Edmonton. The vaulted living room with massive windows overlooks your private canal and dock with direct access to Lac Ste. Anne. Main level features a chef's kitchen with quartz counters, stainless appliances, den/office, laundry, and covered deck with motorized screens. Enjoy a family room with wood-burning fireplace and a stunning primary suite with spa-like ensuite. The finished basement includes a custom bunk room, while outside a large yard with firepit awaits. Central A/C, beautiful finishes, and a rare location make this property a must-see! Living on the canal means you can boat, paddleboard, or kayak directly from your own backyard, creating year-round opportunities for fun and relaxation. This is not just a home, it's a true lake lifestyle.

Built in 2024

Essential Information

MLS® #	E4460717
Price	\$799,000
Lease Rate	\$15



Bedrooms	4
Bathrooms	3.50
Full Baths	3
Half Baths	1
Square Footage	2,307
Acres	0.17
Year Built	2024
Type	Rural
Sub-Type	Detached Single Family
Style	2 Storey
Status	Active

Community Information

Address	204 3410 Ste. Anne Trail
Area	Rural Lac Ste. Anne County
Subdivision	Windmill Harbour
City	Rural Lac Ste. Anne County
County	ALBERTA
Province	AB
Postal Code	T0E 0A1

Amenities

Features	Air Conditioner, Deck
----------	-----------------------

Interior

Interior Features	ensuite bathroom
Heating	Forced Air-1, Natural Gas
Fireplace	Yes
Stories	3
Has Basement	Yes
Basement	Full, Finished

Exterior

Exterior	Wood
Exterior Features	Backs Onto Lake, Beach Access, Boating, Fenced, Gated Community, Golf Nearby, Lake Access Property, Landscaped, No Back Lane, Shopping Nearby, Waterfront Property
Construction	Wood
Foundation	Concrete Perimeter

Additional Information

Date Listed	October 3rd, 2025
Days on Market	11
Zoning	Zone 71
HOA Fees	220
HOA Fees Freq.	Monthly

DATA IS DEEMED RELIABLE BUT IS NOT GUARANTEED ACCURATE BY THE REALTORS® ASSOCIATION OF EDMONTON. COPYRIGHT 2025 BY THE REALTORS® ASSOCIATION OF EDMONTON. ALL RIGHTS RESERVED.Trademarks are owned or controlled by the Canadian Real Estate Association (CREA) and identify real estate professionals who are members of CREA (REALTOR®, REALTORS®) and/or the quality of services they provide (MLS®, Multiple Listing Service®)

Listing information last updated on October 14th, 2025 at 6:47am MDT