

\$434,900 - 708 Grouse Close, Cold Lake

MLS® #E4461196

\$434,900

4 Bedroom, 3.00 Bathroom, 1,340 sqft
Single Family on 0.00 Acres

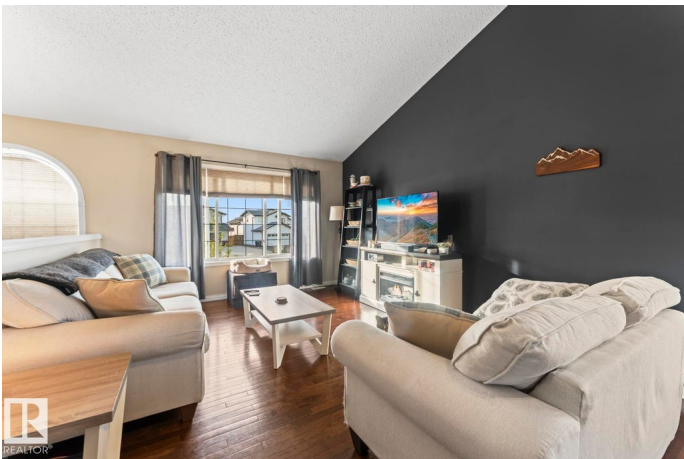
Cold Lake North, Cold Lake, AB

This beautifully maintained single-family home offers the perfect blend of comfort, functionality, and outdoor space. Nestled on a large, tree-filled lot in a peaceful cul-de-sac, this property provides privacy, tranquility, and even a partial lake view. Step inside to find a bright, airy interior featuring rich hardwood and ceramic tile flooring throughout. The home is equipped with central air conditioning for year-round comfort and boasts a new hot water tank, giving you peace of mind for years to come. Outside, the amenities continue with a heated double car garage—perfect for cold winters—and an oversized paved RV pad, ideal for storing your recreational vehicles or additional parking. Whether you're entertaining guests or enjoying a quiet evening, the spacious yard surrounded by mature trees creates the ultimate outdoor escape.

Built in 2007

Essential Information

MLS® #	E4461196
Price	\$434,900
Bedrooms	4
Bathrooms	3.00
Full Baths	3
Square Footage	1,340
Acres	0.00



Year Built	2007
Type	Single Family
Sub-Type	Detached Single Family
Style	Bi-Level
Status	Active

Community Information

Address	708 Grouse Close
Area	Cold Lake
Subdivision	Cold Lake North
City	Cold Lake
County	ALBERTA
Province	AB
Postal Code	T9M 0A5

Amenities

Amenities	Air Conditioner, Deck, Hot Water Natural Gas, R.V. Storage
Parking	Double Garage Attached

Interior

Interior Features	ensuite bathroom
Appliances	Air Conditioning-Central, Dishwasher-Built-In, Dryer, Garage Opener, Microwave Hood Fan, Refrigerator, Stove-Electric, Washer
Heating	Forced Air-1, Natural Gas
Stories	2
Has Basement	Yes
Basement	Full, Finished

Exterior

Exterior	Wood, Vinyl
Exterior Features	Cul-De-Sac, Fenced, Fruit Trees/Shrubs, View Lake
Roof	Asphalt Shingles
Construction	Wood, Vinyl
Foundation	Concrete Perimeter

Additional Information

Date Listed	October 6th, 2025
Days on Market	4
Zoning	Zone 60

DATA IS DEEMED RELIABLE BUT IS NOT GUARANTEED ACCURATE BY THE REALTORS® ASSOCIATION OF EDMONTON. COPYRIGHT 2025 BY THE REALTORS® ASSOCIATION OF EDMONTON. ALL RIGHTS RESERVED. Trademarks are owned or controlled by the Canadian Real Estate Association (CREA) and identify real estate professionals who are members of CREA (REALTOR®, REALTORS®) and/or the quality of services they provide (MLS®, Multiple Listing Service®)

Listing information last updated on October 10th, 2025 at 3:47am MDT