

\$639,000 - 11124 110a Avenue, Edmonton

MLS® #E4461771

\$639,000

2 Bedroom, 3.50 Bathroom, 1,811 sqft

Single Family on 0.00 Acres

Queen Mary Park, Edmonton, AB

Eloquently kept mid century charm with no expense spared upgrading this gorgeous home to meet the modern lifestyle! Sitting on a massive lot, this equally large and expanded bungalow offers over 2,700 total sq ft of total living space, 2 beds upstairs, space to add another in the partly finished basement, main floor laundry to age into, and 3.5 gorgeous bathrooms (2 with steam showers). The main floor is bright, expansive, wide open with clean sight lines thanks to the engineered addition, and the kitchen is a chefs dream and entertainers canvas. The list of upgrades is long including: a/c, new furnace/hot water tank, bathrooms, weeping tile, sump pump, waterproofing foundation, electrical service, plumbing, windows, roof, gas bbq hook up, insulation, hot tub rough in, and exterior Italian old world style stucco. Queen Mary Park is the perfect proximity to downtown, two major LRT stations, schools K to University, the Royal Alex, Kingsway Mall, dining/entertainment - everything you need in life!

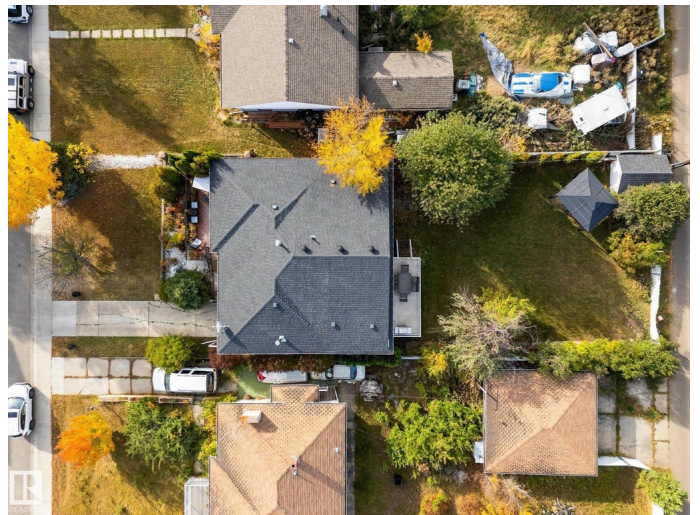
Built in 1951

Essential Information

MLS® # E4461771

Price \$639,000

Bedrooms 2



Bathrooms	3.50
Full Baths	3
Half Baths	1
Square Footage	1,811
Acres	0.00
Year Built	1951
Type	Single Family
Sub-Type	Detached Single Family
Style	Bungalow
Status	Active

Community Information

Address	11124 110a Avenue
Area	Edmonton
Subdivision	Queen Mary Park
City	Edmonton
County	ALBERTA
Province	AB
Postal Code	T5H 1K1

Amenities

Amenities	Deck, Detectors Smoke, Open Beam, Vaulted Ceiling
Parking	Front/Rear Drive Access

Interior

Interior Features	ensuite bathroom
Appliances	Dishwasher-Built-In, Dryer, Oven-Built-In, Oven-Microwave, Refrigerator, Stove-Countertop Electric, Washer
Heating	Forced Air-1, Natural Gas
Fireplace	Yes
Fireplaces	Mantel
Stories	2
Has Basement	Yes
Basement	Full, Partially Finished

Exterior

Exterior	Wood, Vinyl
Exterior Features	Shopping Nearby
Roof	Asphalt Shingles

Construction	Wood, Vinyl
Foundation	Concrete Perimeter

Additional Information

Date Listed	October 10th, 2025
Days on Market	3
Zoning	Zone 08

DATA IS DEEMED RELIABLE BUT IS NOT GUARANTEED ACCURATE BY THE REALTORS® ASSOCIATION OF EDMONTON. COPYRIGHT 2025 BY THE REALTORS® ASSOCIATION OF EDMONTON. ALL RIGHTS RESERVED.Trademarks are owned or controlled by the Canadian Real Estate Association (CREA) and identify real estate professionals who are members of CREA (REALTOR®, REALTORS®) and/or the quality of services they provide (MLS®, Multiple Listing Service®)

Listing information last updated on October 13th, 2025 at 10:47am MDT