

\$399,900 - 12308 86 Street, Edmonton

MLS® #E4461869

\$399,900

3 Bedroom, 2.00 Bathroom, 1,054 sqft

Single Family on 0.00 Acres

Delton, Edmonton, AB

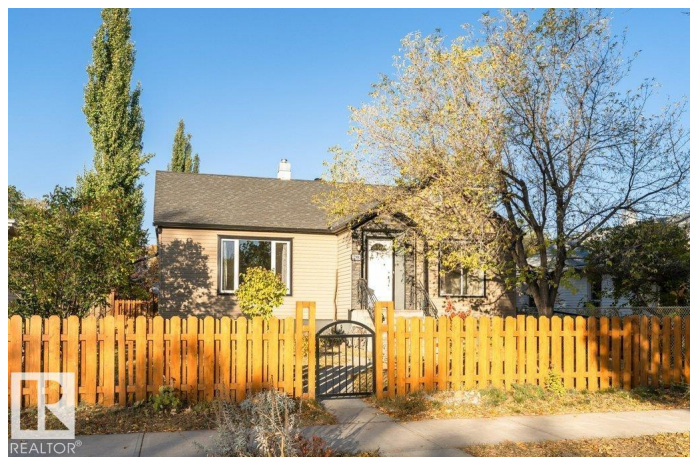
Step into this beautifully preserved 1940s character home that blends vintage charm with thoughtful modern upgrades. From the moment you enter, you're greeted by original wooden doors adorned with sparkling glass doorknobs, coved ceilings, stained glass windows & original hardwood floors echoing the craftsmanship of a bygone era. The modern white kitchen is built around the original cabinet refrigerator which converts into a great wine cabinet. Downstairs, over \$70K in basement renovations have transformed the space into a fully equipped in-law suite. Set on a generous fully fenced 50 x 150 ft lot, the property boasts an oversized single garage, a storage shed, and a spacious deck, perfect for entertaining. A cozy firepit invites evening gatherings, while beautiful perennials bloom throughout the landscaped yard, adding color and charm in every season. This home is a rare gem—where vintage elegance meets modern functionality. Too many upgrades to mention. A commuters dream location to the DT core.

Built in 1945

Essential Information

MLS® # E4461869

Price \$399,900



Bedrooms	3
Bathrooms	2.00
Full Baths	2
Square Footage	1,054
Acres	0.00
Year Built	1945
Type	Single Family
Sub-Type	Detached Single Family
Style	Bungalow
Status	Active

Community Information

Address	12308 86 Street
Area	Edmonton
Subdivision	Delton
City	Edmonton
County	ALBERTA
Province	AB
Postal Code	T5B 3L2

Amenities

Amenities	Deck, Fire Pit, Front Porch
Parking	Over Sized, RV Parking, Single Garage Detached

Interior

Interior Features	ensuite bathroom
Appliances	Dryer, Hood Fan, Storage Shed, Washer, Window Coverings, Refrigerators-Two, Stoves-Two
Heating	Forced Air-1, Natural Gas
Fireplace	Yes
Fireplaces	Insert
Stories	2
Has Basement	Yes
Basement	Full, Finished

Exterior

Exterior	Wood, Vinyl
Exterior Features	Back Lane, Fenced, Fruit Trees/Shrubs, Low Maintenance Landscape, Playground Nearby, Public Transportation, Schools, Shopping Nearby

Roof	Asphalt Shingles
Construction	Wood, Vinyl
Foundation	Concrete Perimeter

Additional Information

Date Listed	October 12th, 2025
Days on Market	1
Zoning	Zone 05

DATA IS DEEMED RELIABLE BUT IS NOT GUARANTEED ACCURATE BY THE REALTORS® ASSOCIATION OF EDMONTON. COPYRIGHT 2025 BY THE REALTORS® ASSOCIATION OF EDMONTON. ALL RIGHTS RESERVED.Trademarks are owned or controlled by the Canadian Real Estate Association (CREA) and identify real estate professionals who are members of CREA (REALTOR®, REALTORS®) and/or the quality of services they provide (MLS®, Multiple Listing Service®)

Listing information last updated on October 13th, 2025 at 11:02am MDT