

# \$375,000 - 23 Gillingham Crescent, Sherwood Park

MLS® #E4462394

**\$375,000**

5 Bedroom, 2.50 Bathroom, 1,219 sqft  
Single Family on 0.00 Acres

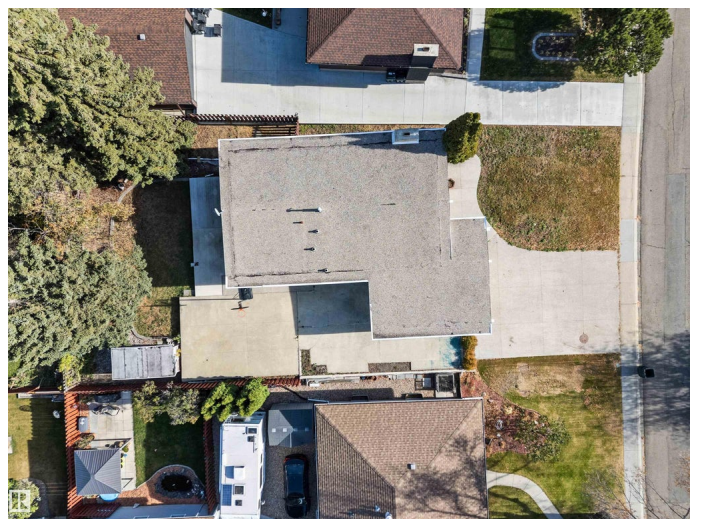
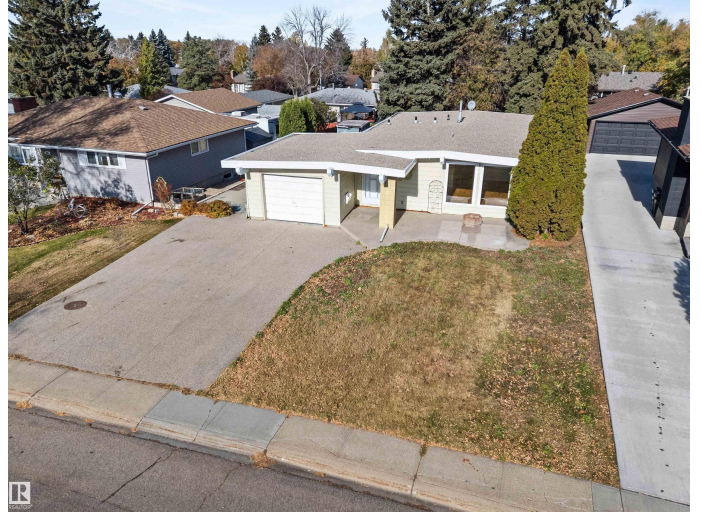
Glen Allan, Sherwood Park, AB

This charming bungalow brimming with vintage curb appeal, and presenting 2,345 square feet of air conditioned possibility, rests in the desirable Glen Allan neighbourhood. With some TLC, imagination and a little sweat, it's a great opportunity to move in, renovate & flip, or earn rental income. With parks and schools in the vicinity, the area radiates a warm family spirit, while also being conveniently close to shopping, transit and so much more! Inside, the bright & open main floor flows seamlessly between the living room (presenting hardwood floors and fireplace), shared dining area, and spacious kitchen. Private quarters include 3 bedrooms serviced by a 4pc bathroom, with the primary suite offering his & hers closets & its own 2pc ensuite. The fully finished basement extends your living space in the cozy rec room with bar, while large 4th & 5th bedrooms are serviced by a 3pc bathroom. An attached single car garage & R.V. pad provide more than enough parking, and the yard is ready for you to unwind in.

Built in 1972

## Essential Information

MLS® #	E4462394
Price	\$375,000
Bedrooms	5



Bathrooms	2.50
Full Baths	2
Half Baths	1
Square Footage	1,219
Acres	0.00
Year Built	1972
Type	Single Family
Sub-Type	Detached Single Family
Style	Bungalow
Status	Active

### Community Information

Address	23 Gillingham Crescent
Area	Sherwood Park
Subdivision	Glen Allan
City	Sherwood Park
County	ALBERTA
Province	AB
Postal Code	T8A 2X5

### Amenities

Amenities	Off Street Parking, On Street Parking, Air Conditioner, Bar, Patio, Smart/Program. Thermostat, R.V. Storage, Secured Parking, Vaulted Ceiling, Vinyl Windows
Parking	Insulated, RV Parking, Single Garage Attached

### Interior

Interior Features	ensuite bathroom
Appliances	Air Conditioning-Central, Dishwasher-Built-In, Dryer, Fan-Ceiling, Stove-Gas, Washer, Window Coverings, Refrigerators-Two
Heating	Forced Air-1, Natural Gas
Fireplace	Yes
Fireplaces	Mantel, Stone Facing
Stories	2
Has Basement	Yes
Basement	Full, Finished

### Exterior

Exterior	Wood, Vinyl
----------	-------------

Exterior Features	Fenced, Flat Site, Fruit Trees/Shrubs, Landscaped, Low Maintenance Landscape, No Back Lane, Paved Lane, Playground Nearby, Public Swimming Pool, Public Transportation, Schools, Shopping Nearby
Roof	Tar & Gravel
Construction	Wood, Vinyl
Foundation	Concrete Perimeter

### **Additional Information**

Date Listed	October 16th, 2025
-------------	--------------------

Days on Market	3
----------------	---

Zoning	Zone 25
--------	---------

DATA IS DEEMED RELIABLE BUT IS NOT GUARANTEED ACCURATE BY THE REALTORS® ASSOCIATION OF EDMONTON. COPYRIGHT 2025 BY THE REALTORS® ASSOCIATION OF EDMONTON. ALL RIGHTS RESERVED. Trademarks are owned or controlled by the Canadian Real Estate Association (CREA) and identify real estate professionals who are members of CREA (REALTOR®, REALTORS®) and/or the quality of services they provide (MLS®, Multiple Listing Service®)

Listing information last updated on October 19th, 2025 at 11:32am MDT